

3.1.4.4 Calibration curve 4

Table 3.16 Calibration curve data of freeze-thaw test of stability.

Theoretical conc. (ng/ml)	Propranolol Area	Sildenafil Area	Ratio	Measured Conc.	Accuracy %
50	1179	106597	0.0111	55.855	111.71
100	2741	115879	0.0237	101.517	101.52
200	4998	109522	0.0456	181.214	90.61
500	14560	112487	0.1294	485.066	97.01
1000	25296	95650	0.2645	974.647	97.46
2000	53710	98247	0.5467	1997.918	99.90
3000	94598	112900	0.8379	3053.783	101.79

Slope	Intercept	RSQ	Factor	Correllation
0.000276	-0.004344	0.999471	3625.802662	0.999735

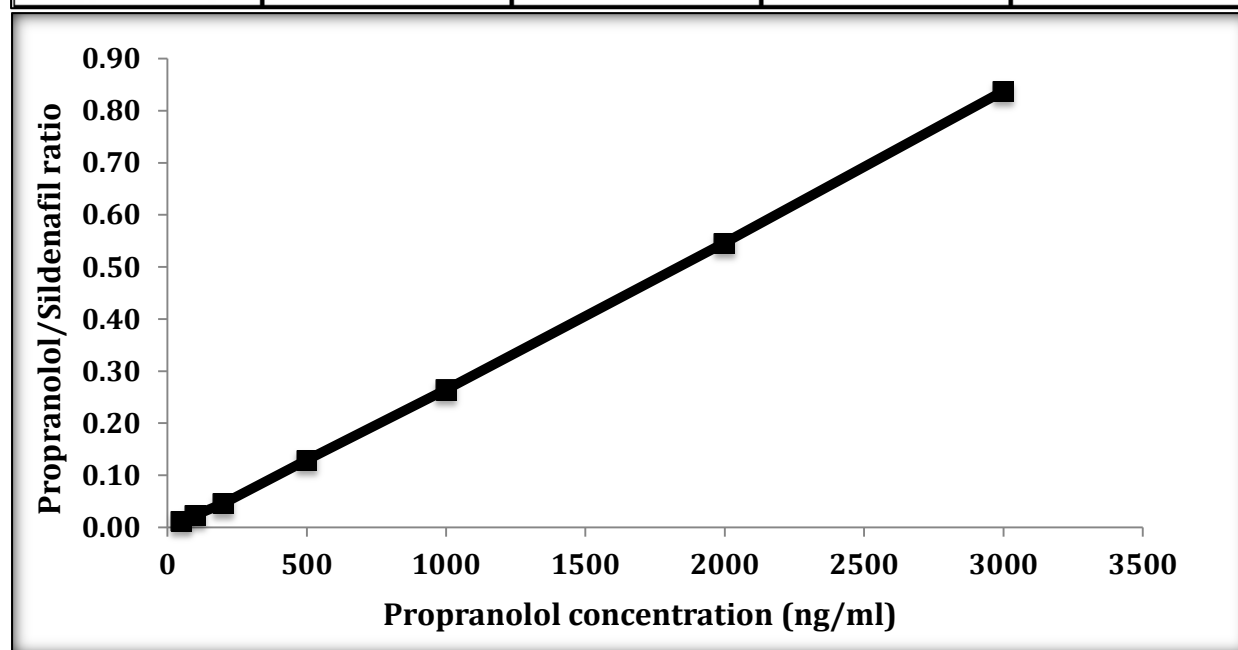


Figure 3.4 Freeze-thaw stability test calibration curve of propranolol in Krebs buffer.

Measured Conc. = (Ratio +0.004344)/ 0.000276
 Function is $Y = 0.000276X - 0.004344$ ($R^2 = 0.999471$)